

Rinnai®

EXPERIENCE OUR INNOVATION™

Boiler Applications Drawings



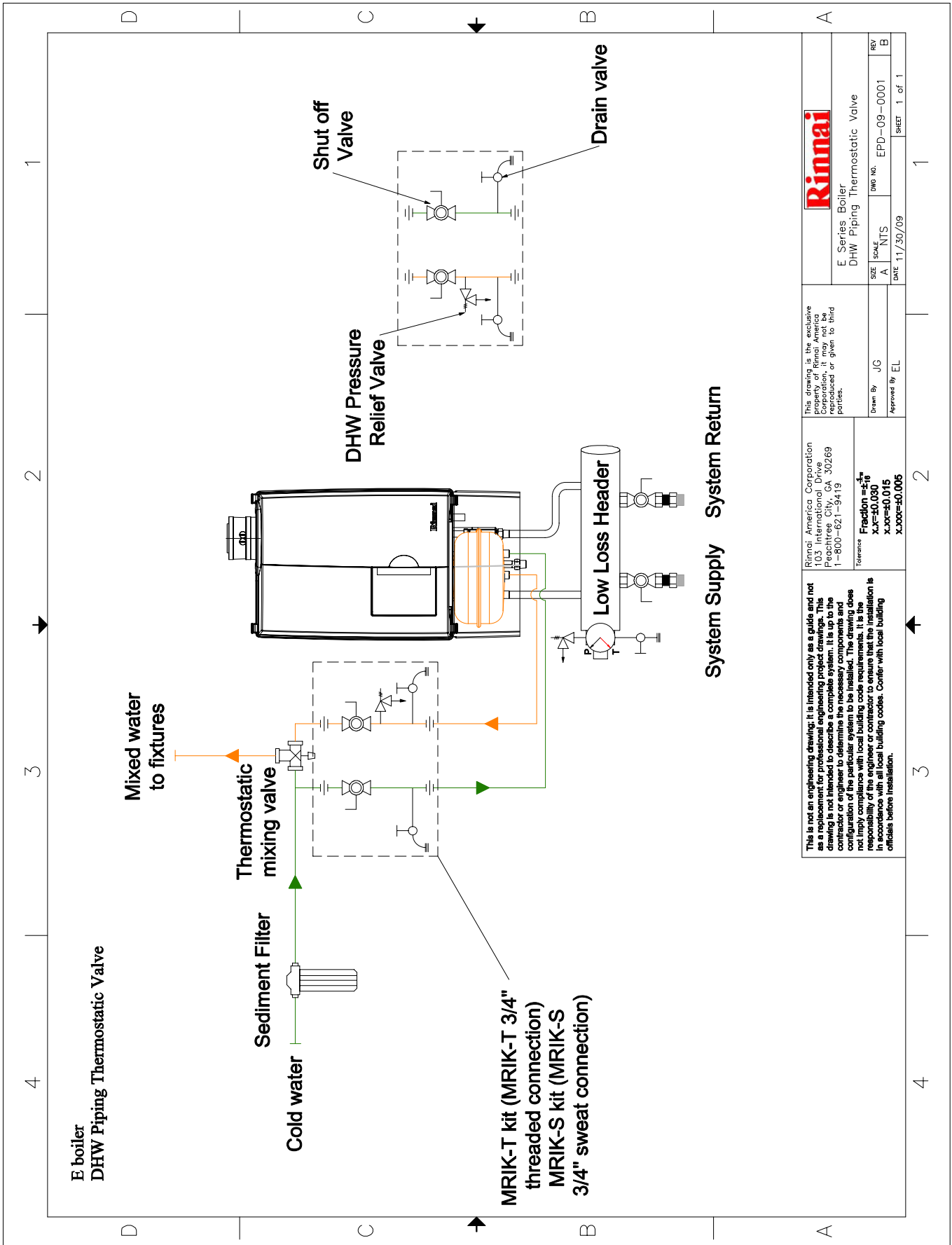
80000026 Rev B

07//2010

Contents

Drawing No.	Boiler Model	Description	
EPD-09-0001 Rev B.....	E Series Boiler	DHW Piping Thermostatic Valve	3
EPA-09-0001 Rev B.....	E Series Boiler	Single Zone.....	4
QPD-09-0001 Rev B	Q175C Boiler	DHW Recirculation	5
QPD-09-0002 Rev B	Q Series Boiler	DHW from Indirect Tank	6
QPD-09-0003 Rev B	Q Series Boiler	Single Zone Priority DHW.....	7
QPD-09-0004 Rev B	Q Series Boiler.....	4 Zone Valve with DHW	8
QPA-09-0001 Rev C	Q Series Boiler.....	3 On-Off High Temperature Zones.....	9
QPA-09-0002 Rev B.....	Q Series Boiler.....	3 Way Thermostatic Mixing	10
QPA-09-0003 Rev B.....	Q Series Boiler.....	3 Way Motorized Mixing	11
QPA-09-0004 Rev B.....	Q Series Boiler.....	3 Zone Valve.....	12
QPA-09-0005 Rev C	Q Series Boiler.....	Direct Coupled Radiant	13
QPA-09-0006 Rev B.....	Q Series Boiler.....	Single Zone Split Loop	14
QPA-09-0007 Rev B.....	Q Series Boiler.....	Snow Melt System	15
QPA-09-0008 Rev B.....	Q Series Boiler.....	3 Zone Pumps	16
QPA-09-0009 Rev B.....	Q & E Series Boilers	Condensate Plumbing with and without Neutralizer	17
QPC-09-0001 Rev B	Q Series Boilers.....	2 Boiler Install	18
QPC-09-0002 Rev B	Q Series Boilers.....	3 Boiler Install	19
QPC-09-0003 Rev B	Q Series Boilers.....	2 Boilers with DHW.....	20
QEC-09-0001 Rev A	Q Series Boilers.....	2 Boilers with DHW Indirect Tank.....	21
QED-09-0001 Rev B	Q Series Boilers.....	Single Zone Circuit with Priority DHW.....	22
QED-09-0002 Rev A	Q Series Boilers.....	4 Zone Valves with Priority DHW	23
LEGEND Rev A.....	Q & E Series Boilers	Legend.....	24

Rinnai is continually updating and improving products; therefore, drawings and specifications are subject to change without prior notice. Local, state, provincial and federal codes must be adhered to prior to installation.



This is not an engineering drawing; it is intended only as a guide and not as a replacement for professional engineering project drawings. This drawing is not intended to describe a complete system. It is up to the contractor or engineer to determine the necessary components and quantities of the parts to be installed. The engineer or contractor does not in any way warrant or guarantee the quality of the work. It is the responsibility of the engineer or contractor to ensure that the installation is in accordance with all local building codes. Confer with local building officials before installation.

Rinnai America Corporation
103 International Drive
Peachtree City, GA 30269
1-800-821-3419

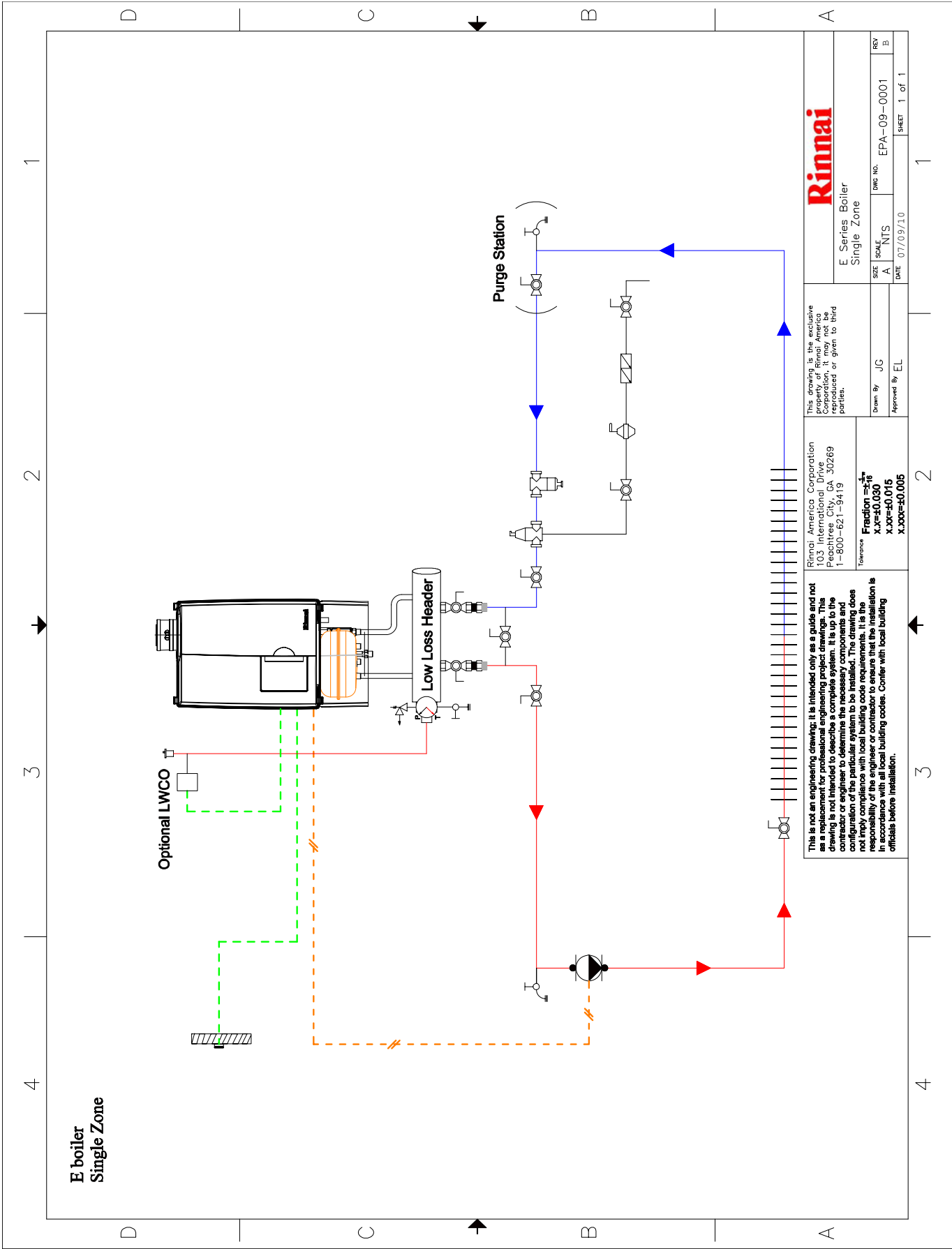
Tolerance
Fraction = $\frac{1}{16}$
X.X = ±0.030
X.XXX = ±0.015
X.XXXX = ±0.005

This drawing is the exclusive property of Rinnai America Corporation; it may not be reproduced or given to third parties.

Drawn By: JG
Approved By: EL

Rinnai
E Series Boiler
DHW Piping Thermostatic Valve

SIZE: A
SCALE: NTS
DWG NO.: EPD-09-0001
REV: B
DATE: 11/30/09
SHEET: 1 of 1



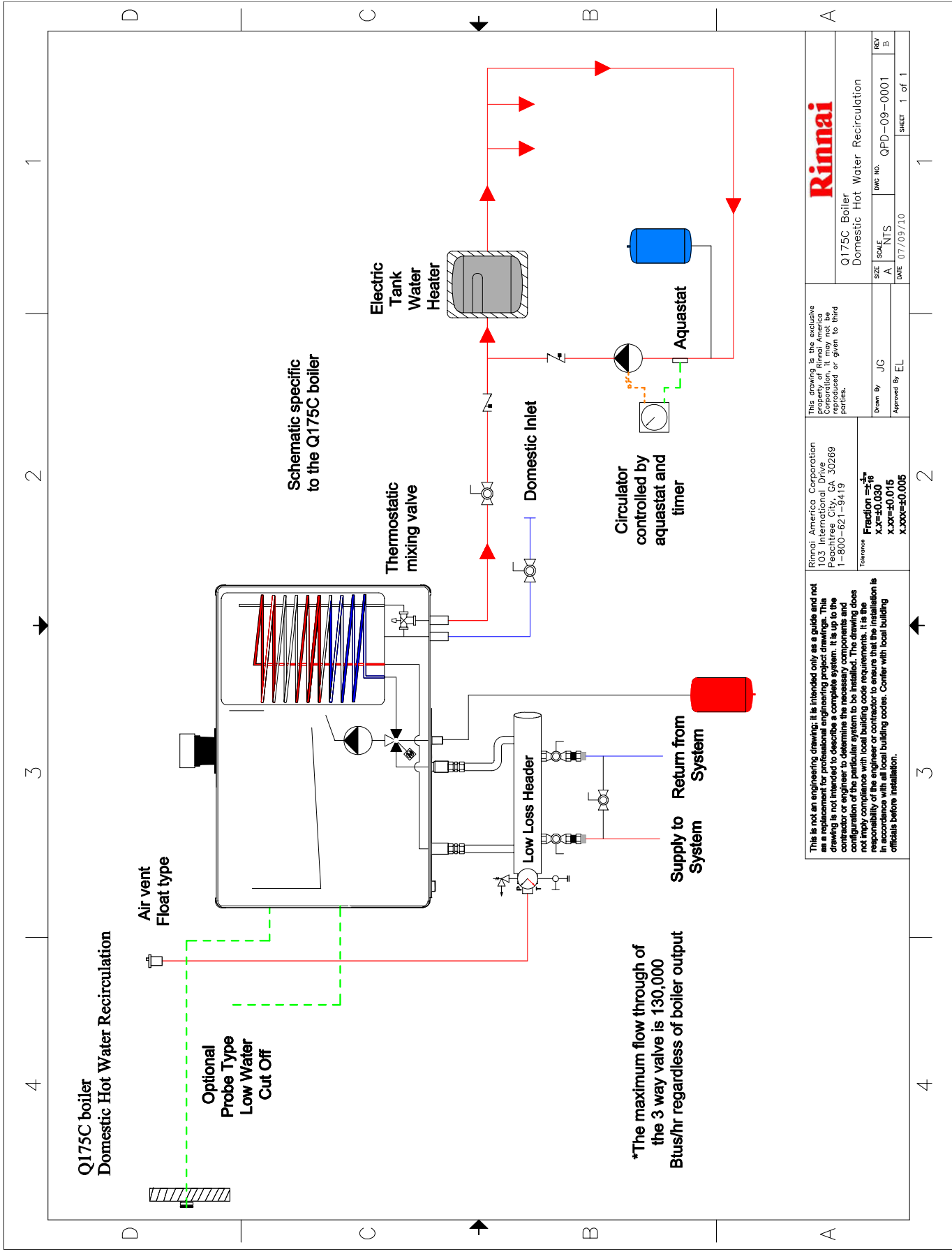
		E Series Boiler Single Zone	
		SIZE A	REV B
Drawn By	JC	DWG No.	EPA-09-0001
Approved By	EL	DATE	07/09/10
			SHEET 1 of 1

This drawing is the exclusive property of Rimai America Corporation. It may not be reproduced or given to third parties.

Rimai America Corporation
103 International Drive
Peachtree City, GA 30269
1-800-621-9419

Tolerance
Fraction $\frac{x}{y}$
x.xx=±0.030
x.xxx=±0.015
x.xxxx=±0.005

This is not an engineering drawing. It is intended only as a guide and not as a replacement for professional engineering project drawings. This drawing is not intended to describe a complete system. It is up to the contractor or engineer to determine the necessary components and configuration of the particular system to be installed. The drawing does not imply compliance with local building code requirements. It is the responsibility of the engineer or contractor to ensure that the installation is in accordance with all local building codes. Confer with local building officials before installation.



Q175C Boiler Domestic Hot Water Recirculation	
SIZE A	SCALE A
DATE 07/09/10	DWG NO. QPD-09-0001
Drawn By JG	REV B
Approved By EL	SHEET 1 of 1

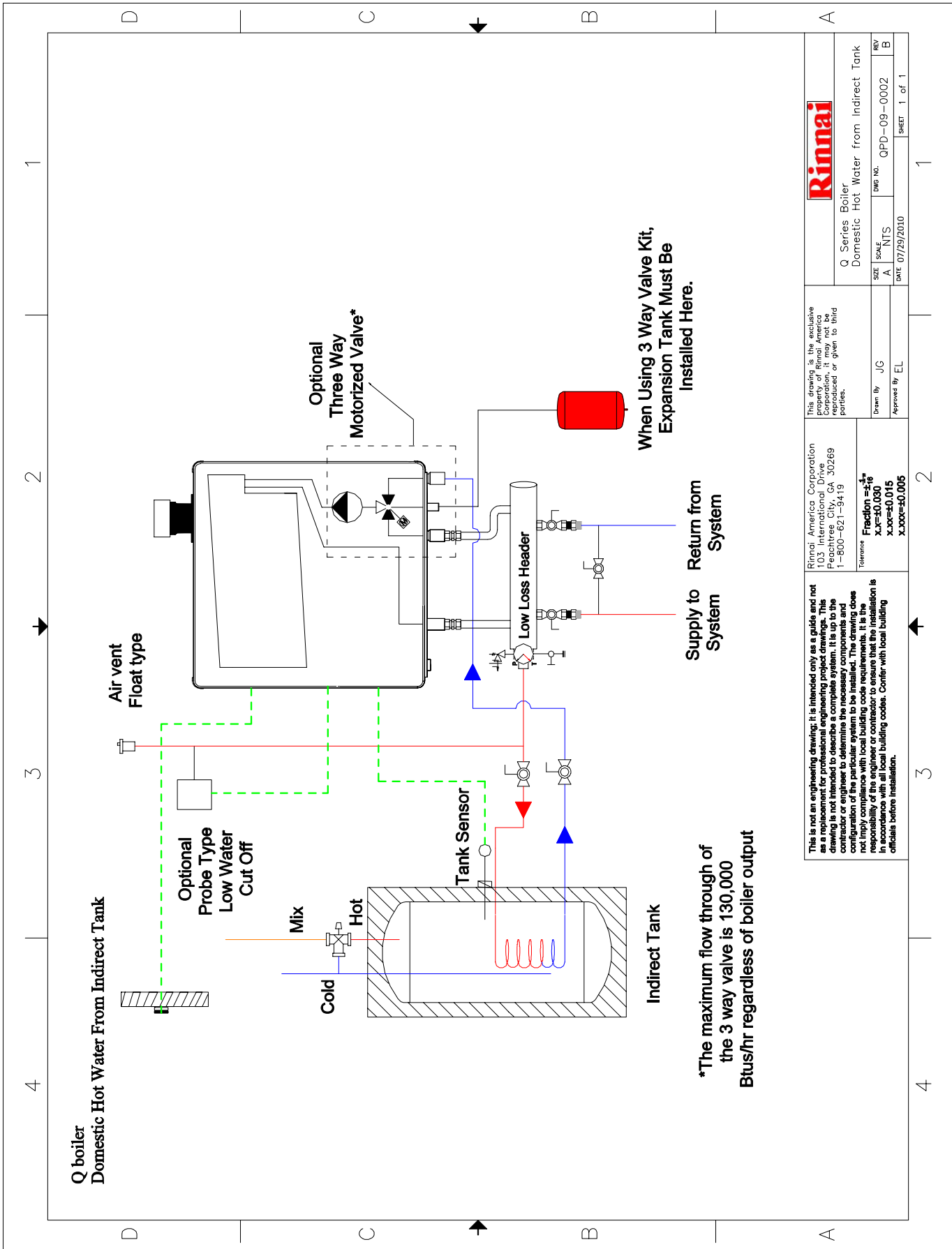
This drawing is the exclusive property of Rinnai America Corporation. It may not be reproduced or given to third parties.

Rinnai America Corporation
 103 International Drive
 Peachtree City, GA 30269
 1-800-621-9419

Tolerance
 Fraction = $\frac{1}{16}$
 X.XX = ±0.030
 X.XXX = ±0.015
 X.XXXX = ±0.005

Drawn By: JG
 Approved By: EL

This is not an engineering drawing. It is intended only as a guide and not as a replacement for professional engineering project drawings. This drawing is not intended to describe a complete system. It is up to the contractor or engineer to determine the necessary components and configuration of the particular system to be installed. The drawing does not imply compliance with local building code requirements. It is the responsibility of the engineer or contractor to ensure that the installation is in accordance with all local building codes. Confer with local building officials before installation.



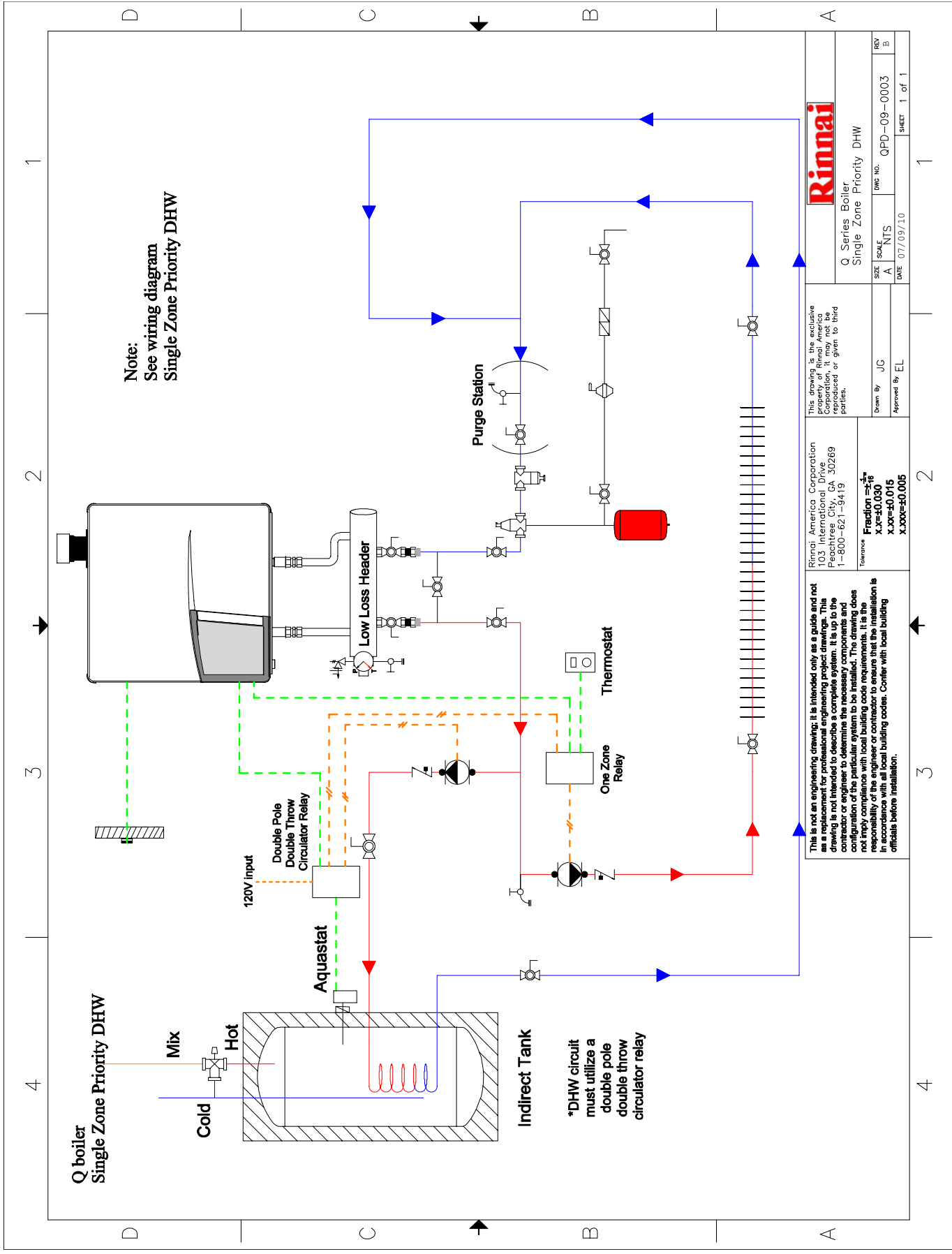
Rinnai	
Q Series Boiler Domestic Hot Water from Indirect Tank	
SIZE	A
SCALE	NTS
DWG NO.	QPD-09-0002
DATE	07/29/2010
Drawn By	JC
Approved By	EL
SHEET	1 of 1

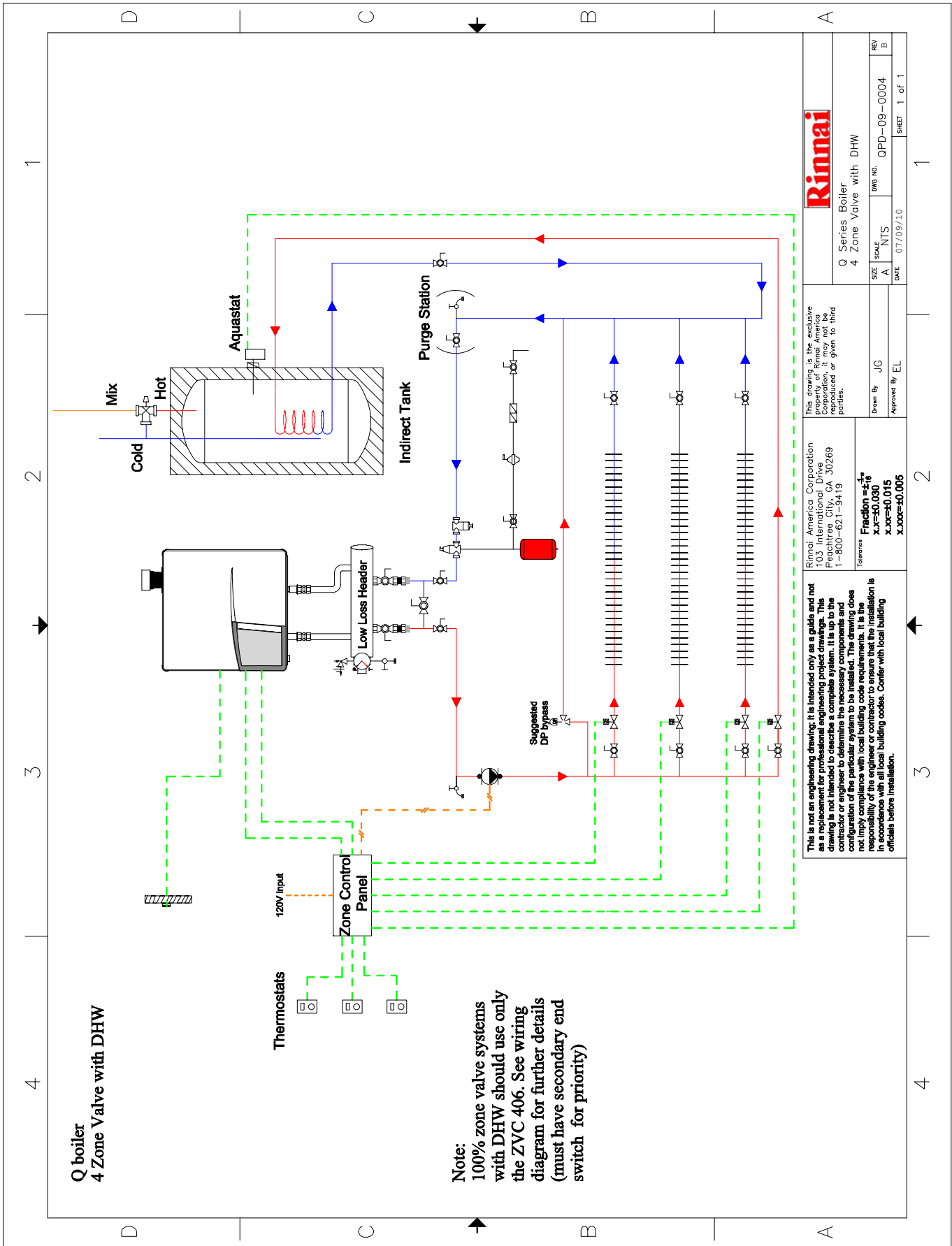
This drawing is the exclusive property of Rinnai America Corporation, it may not be reproduced or given to third parties.

Rinnai America Corporation
103 International Drive
Peachtree City, GA 30269
1-800-621-9419

Tolerances
Fraction $\pm \frac{1}{16}$
X.XX ± 0.030
X.XXX ± 0.015
X.XXXX ± 0.005

This is not an engineering drawing; it is intended only as a guide and not as a replacement for professional engineering project drawings. This drawing is not intended to describe a complete system. It is up to the contractor or engineer to determine the necessary components and configuration of the particular system to be installed. The drawing does not imply compliance with local building code requirements. It is the responsibility of the engineer or contractor to ensure that the installation is in accordance with all local building codes. Center with local building officials before installation.





This drawing is the exclusive property of Rinnai America and is not to be reproduced or given to third parties.

Rinnai America Corporation
103 International Drive
Peachtree City, GA 30269
1-800-621-9419

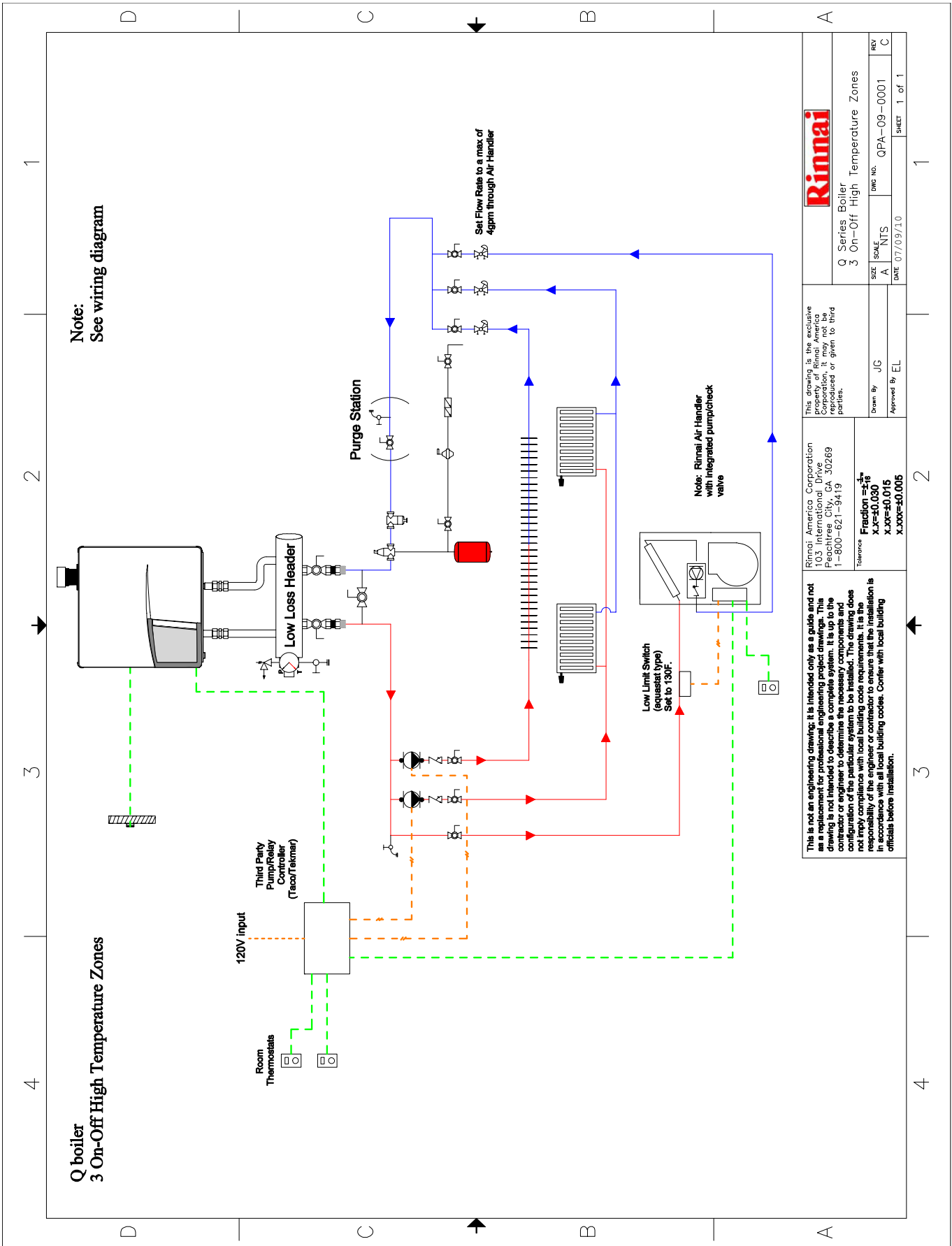
This is not an engineering drawing; it is intended only as a guide and not as a replacement for professional engineering project drawings. This drawing is not intended to describe a complete system. It is up to the contractor or engineer to determine the necessary components and configuration of the particular system to be installed. The drawing does not imply compliance with local building code requirements. It is the responsibility of the engineer or contractor to ensure that the installation is in accordance with applicable building codes. Confer with local building officials before installation.

Tolerances:
Fraction = $\pm \frac{1}{16}$
X.X = ± 0.030
X.XXX = ± 0.015
X.XXXX = ± 0.005

Q Series Boiler
4 Zone Valve with DHW

SIZE	SCALE	DWG NO.	QPD-09-0004	REV
A	N.T.S.			B
DATE			07/09/10	SHEET 1 of 1

Drawn By J/C
Approved By EL



This is not an engineering drawing; it is intended only as a guide and not as a replacement for professional engineering project drawings. This drawing is not intended to describe a complete system. It is up to the contractor or engineer to determine the necessary components and configuration of the particular system to be installed. The drawing does not imply compliance with local building code requirements. It is the responsibility of the engineer or contractor to ensure that the installation is in accordance with all local building codes. Confer with local building officials before installation.

Rinnai America Corporation
103 International Drive
Peachtree City, GA 30269
1-800-621-9419

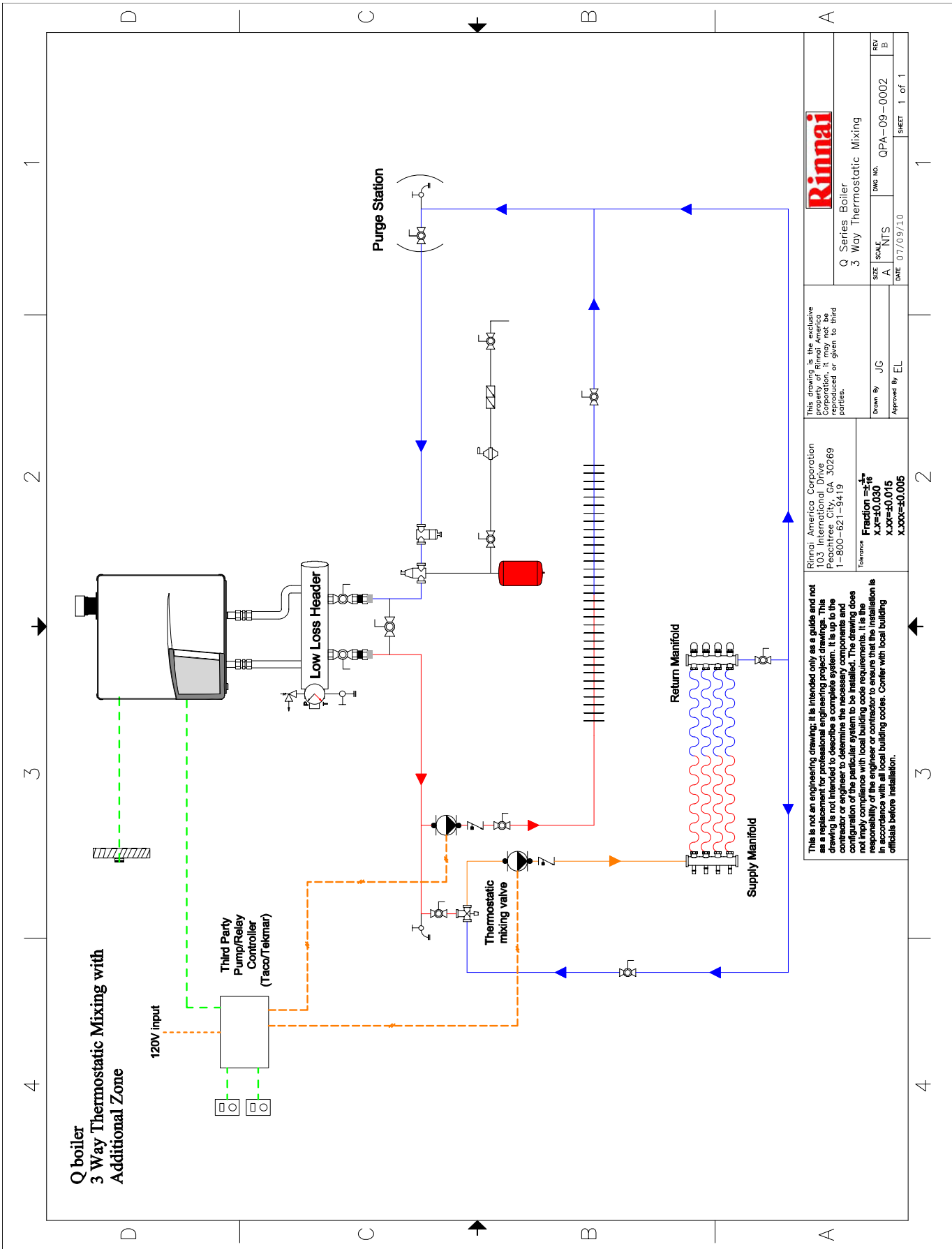
Tolerance:
Fraction $\pm \frac{1}{16}$
X.XX ± 0.030
X.XXX ± 0.015
X.XXXX ± 0.005

This drawing is the exclusive property of Rinnai America Corporation. It is to be reproduced or given to third parties.

Drawn By: JUC
Approved By: EL

Rinnai
Q Series Boiler
3 On-Off High Temperature Zones

SIZE	SCALE	DWG NO.	REV
A	NTS	QPA-09-0001	C
DATE 07/09/10			SHEET 1 of 1



Rinnai

This drawing is the exclusive property of Rinnai America Corporation. It may not be reproduced or given to third parties.

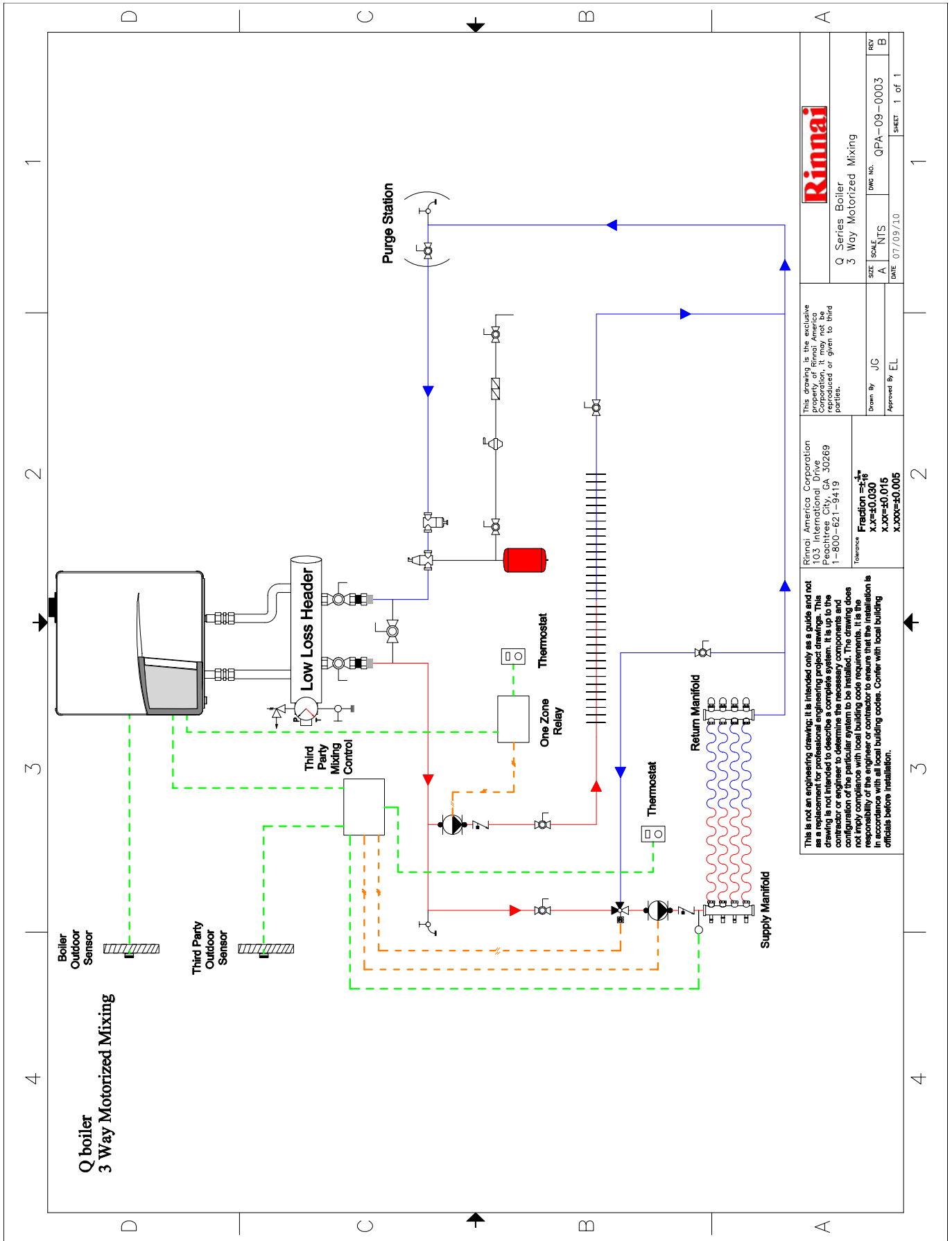
Rinnai America Corporation
103 International Drive
Peachtree City, GA 30269
1-800-621-9419

This is not an engineering drawing. It is intended only as a guide and not as a replacement for professional engineering project drawings. This drawing is not intended to describe a complete system. It is up to the contractor or engineer to determine the necessary components and configuration of the particular system to be installed. The drawing does not imply compliance with local building code requirements. It is the responsibility of the engineer or contractor to ensure that the installation is in accordance with all local building codes. Confer with local building officials before installation.

Q Series Boiler
3 Way Thermostatic Mixing

Drawn By	JG
Approved By	EL
DATE	07/09/10
SIZE	A
SCALE	NTS
DWG No.	QPA-09-0002
REV	B
SHEET	1 of 1

Tolerance
Fraction = $\frac{1}{16}$
x.x = ±0.030
x.xx = ±0.015
x.xxx = ±0.005



Rinnai	
Q Series Boiler 3 Way Motorized Mixing	
SIZE	SCALE
A	NTS
DATE	DWG. NO.
07/09/10	QPA-09-0003
	REV
	B

This drawing is the exclusive property of Rinnai America Corporation. It may not be reproduced or given to third parties.

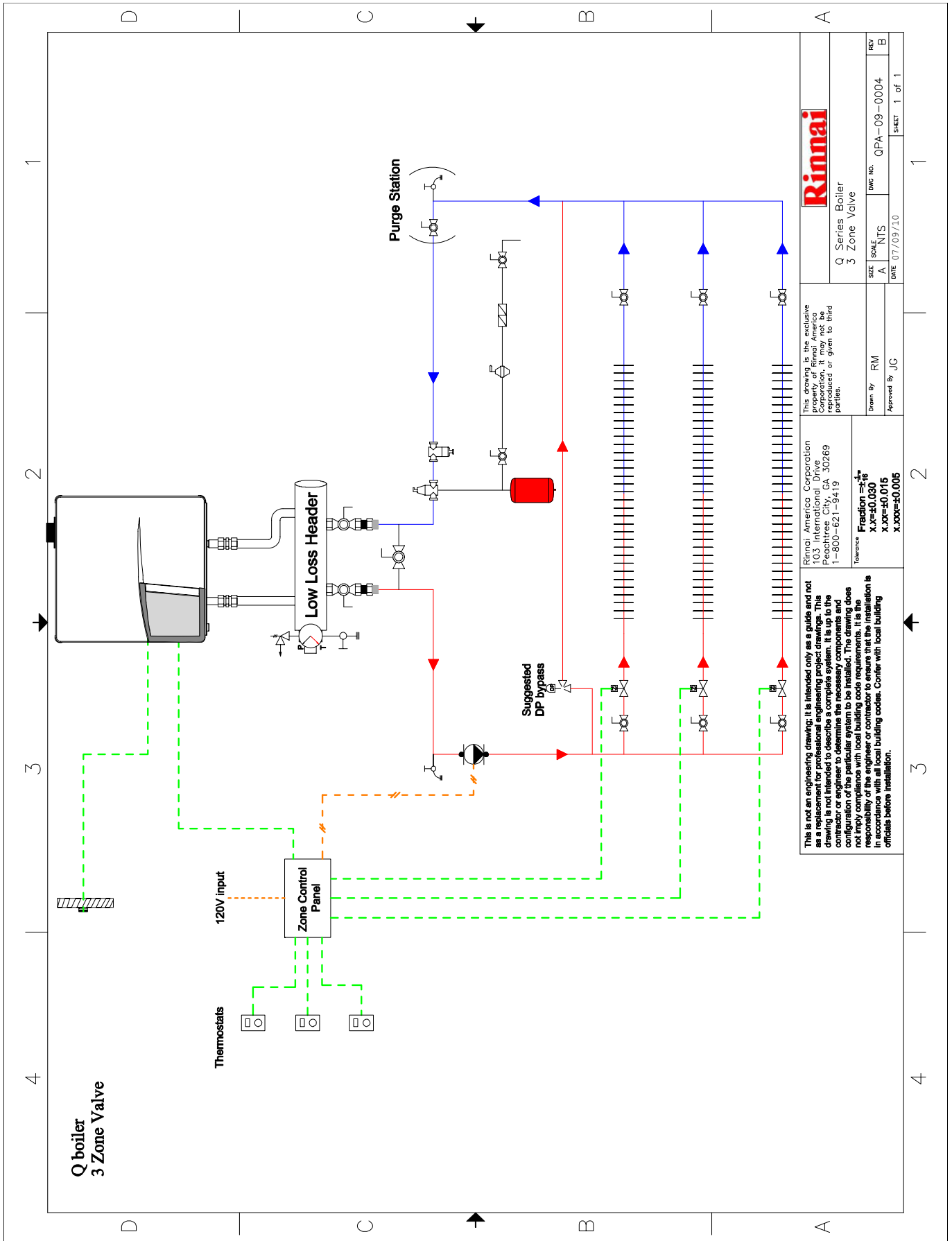
Drawn By: JG
Approved By: EL

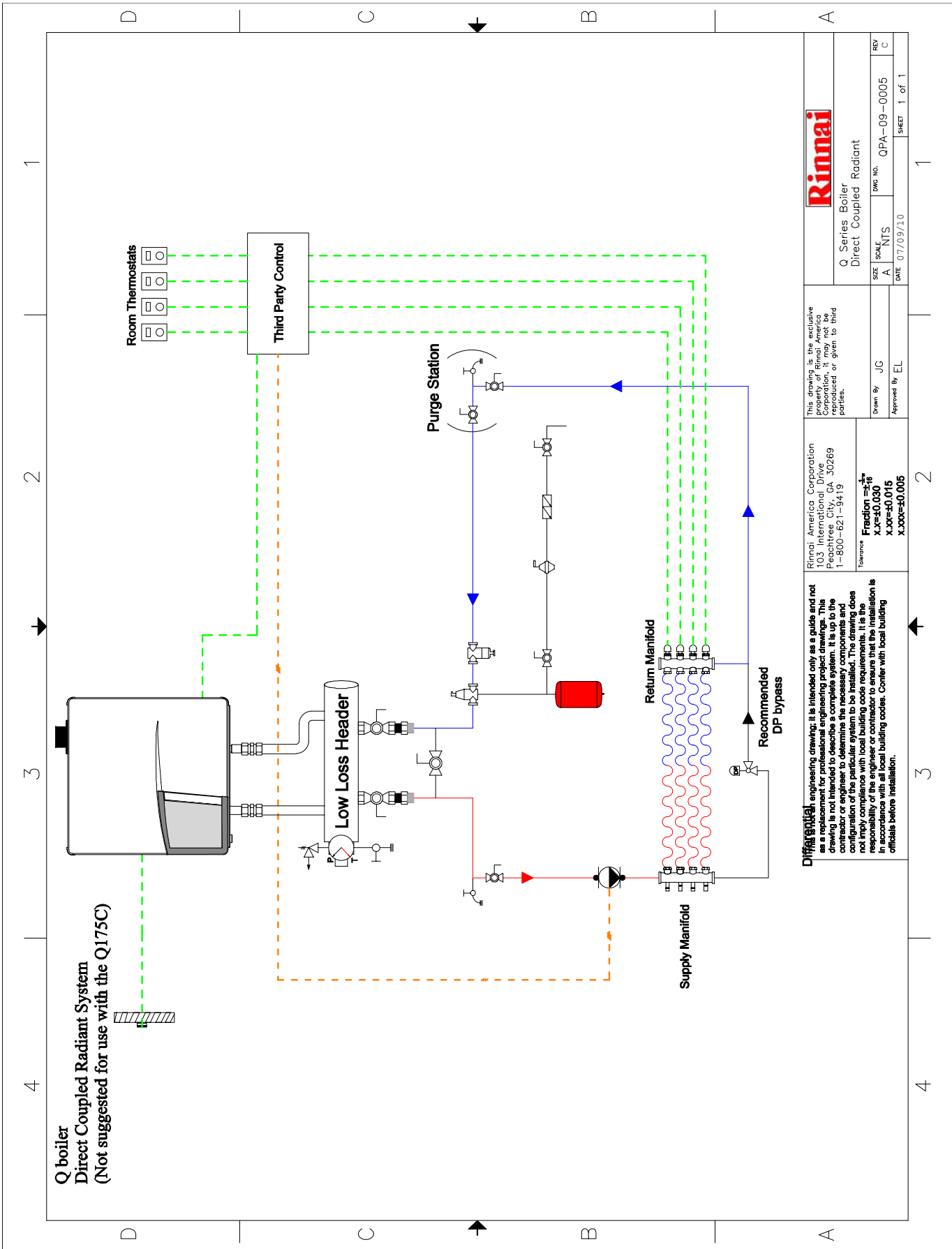
Rinnai America Corporation
103 International Drive
Peachtree City, GA 30269
1-800-621-9419

Tolerance
Fraction = $\frac{1}{16}$
X.XX = ±0.015
X.XXX = ±0.005

This is not an engineering drawing. It is intended only as a guide and not as a replacement for professional engineering project drawings. This drawing is not intended to describe a complete system. It is up to the contractor or engineer to determine the necessary components and configuration of the particular system to be installed. The drawing does not imply compliance with local building code requirements. It is the responsibility of the engineer or contractor to ensure that the installation is in accordance with all local building codes. Confer with local building officials before installation.

1 2 3 4 1 2 3 4





Rinnai	
Q Series Boiler Direct Coupled Radiant	
SIZE	A
SCALE	NTS
DATE	07/09/10
DWG No.	QPA-09-0005
REV	C

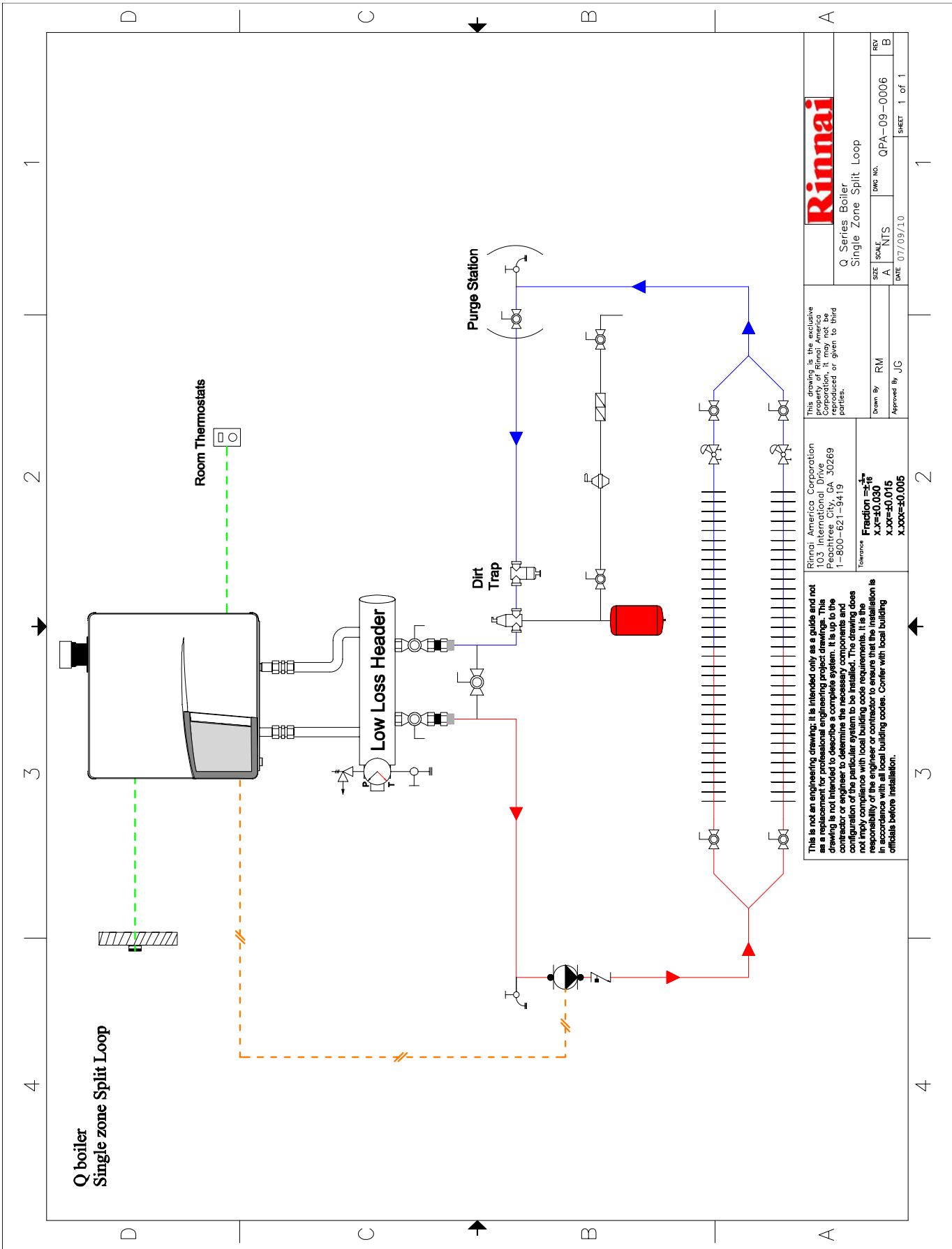
This drawing is the exclusive property of Rinnai America Corporation. It may not be reproduced or given to third parties.

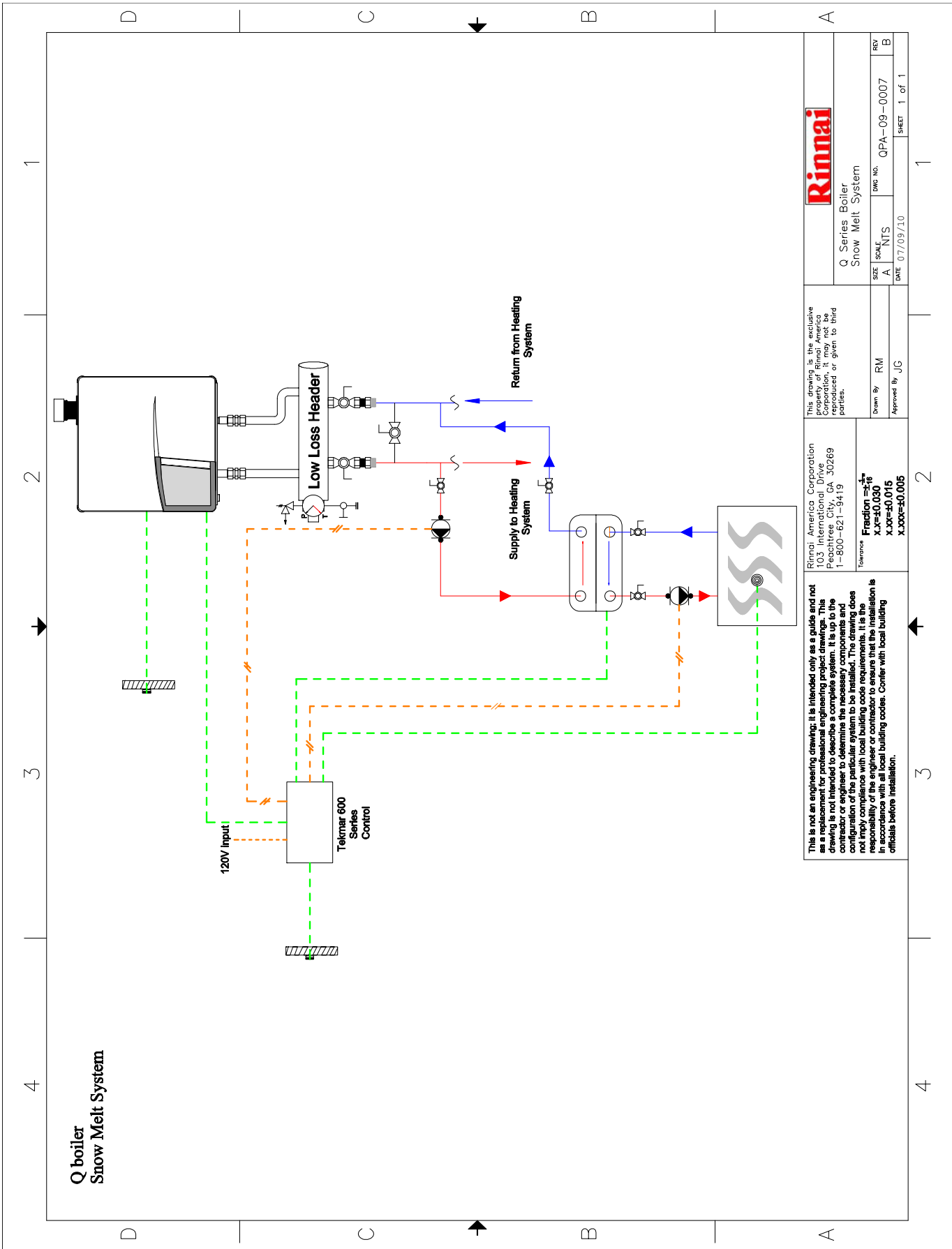
Drawn By: JG
Approved By: EL

Rinnai America Corporation
103 International Drive
Peachtree City, GA 30269
1-800-621-9419

Tolerance
Fraction = $\frac{1}{16}$
X.XX = ±0.015
X.XXX = ±0.005

Disclaimer: This is a preliminary engineering drawing. It is intended only as a guide and not as a replacement for professional engineering project drawings. This drawing is not intended to describe a complete system. It is up to the contractor or engineer to determine the necessary components and configuration of the particular system to be installed. The drawing does not imply compliance with local building code requirements. It is the responsibility of the engineer or contractor to ensure that the installation is in accordance with all local building codes. Confer with local building officials before installation.





This drawing is the exclusive property of Rinnai America Corporation. It may not be reproduced or given to third parties.

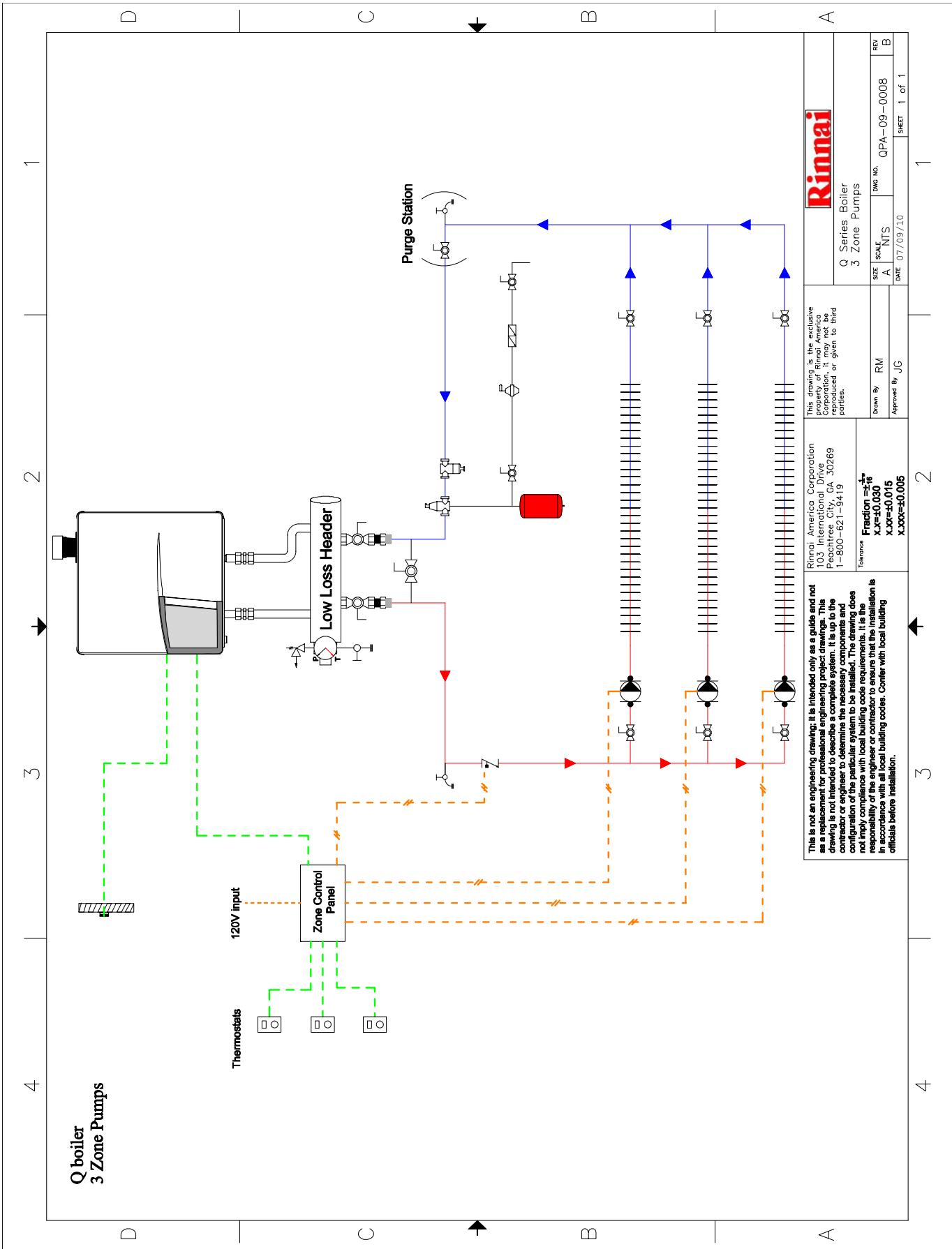
Rinnai America Corporation
103 International Drive
Peachtree City, GA 30269
1-800-621-9419

This is not an engineering drawing. It is intended only as a guide and not as a replacement for professional engineering project drawings. This drawing is not intended to describe a complete system. It is up to the contractor or engineer to determine the necessary components and configuration of the particular system to be installed. The drawing does not imply compliance with local building code requirements. It is the responsibility of the engineer or contractor to ensure that the installation is in accordance with all local building codes. Confer with local building officials before installation.

Q Series Boiler Snow Melt System	REV	B
SIZE	SCALE	DWG. No.
A	NTS	QPA-09-0007
DATE	07/09/10	SHEET 1 of 1

Drawn By: RM
Approved By: JJC

Tolerance
Fraction = 1/16
X.XX=±0.030
X.XXX=±0.015
X.XXXX=±0.005



Rinnai

This drawing is the exclusive property of Rinnai America Corporation. It may not be reproduced or given to third parties.

Rinnai America Corporation
103 International Drive
Peachtree City, GA 30269
1-800-621-9419

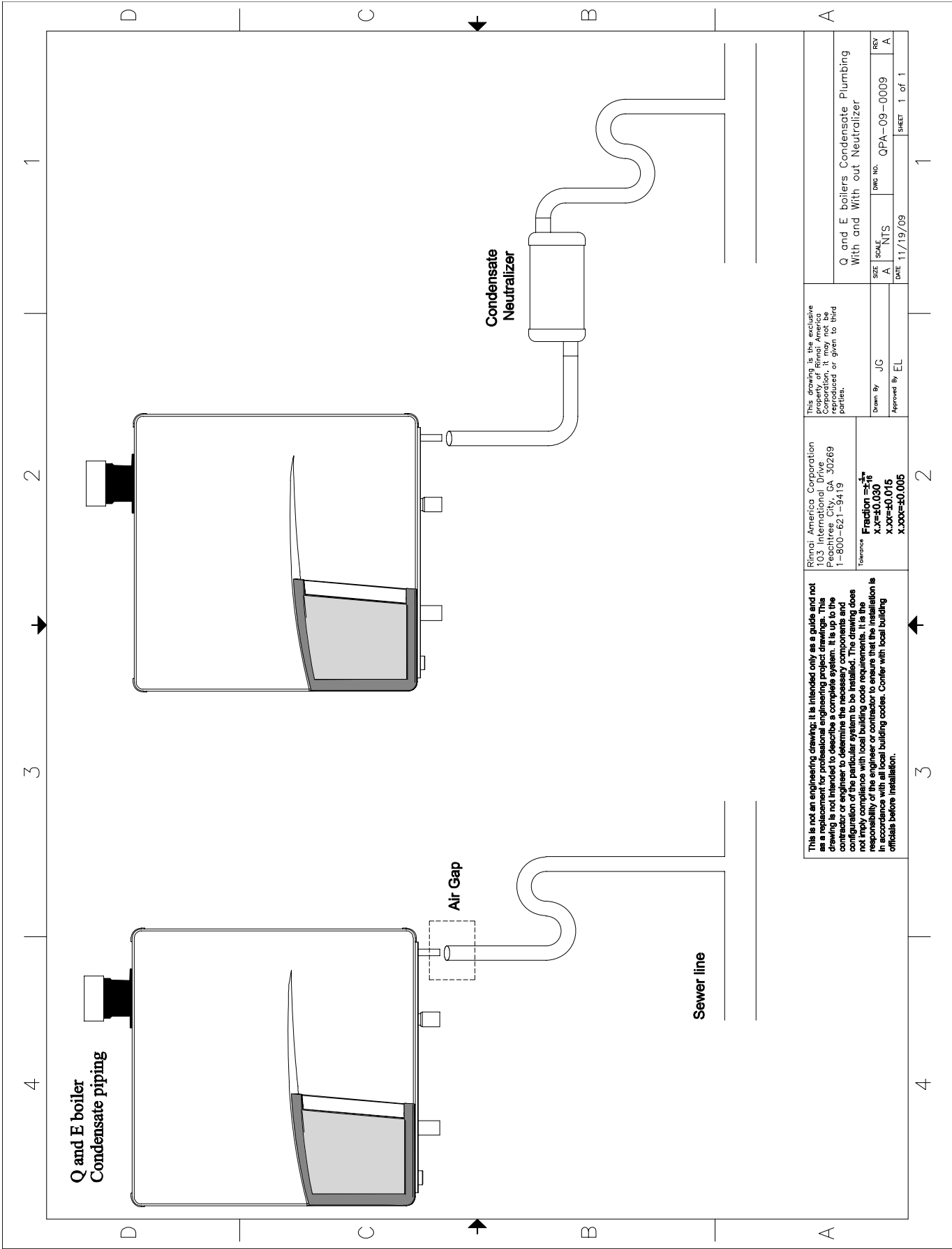
This is not an engineering drawing. It is intended only as a guide and not as a replacement for professional engineering project drawings. This drawing is not intended to describe a complete system. It is up to the contractor or engineer to determine the necessary components and configuration of the particular system to be installed. The drawing does not imply compliance with local building code requirements. It is the responsibility of the engineer or contractor to ensure that the installation is in accordance with all local building codes. Confer with local building officials before installation.

Q Series Boiler
3 Zone Pumps

Drawn By	RM
Approved By	JJC
DATE	07/09/10
SCALE	NTS
SIZE	A
DWG. NO.	QPA-09-0008
REV	B

Tolerance	Fraction = $\frac{1}{16}$
	xx = ±0.030
	x.xx = ±0.015
	x.xxx = ±0.005

SHEET 1 of 1



**Q and E boiler
Condensate piping**

**Condensate
Neutralizer**

Air Gap

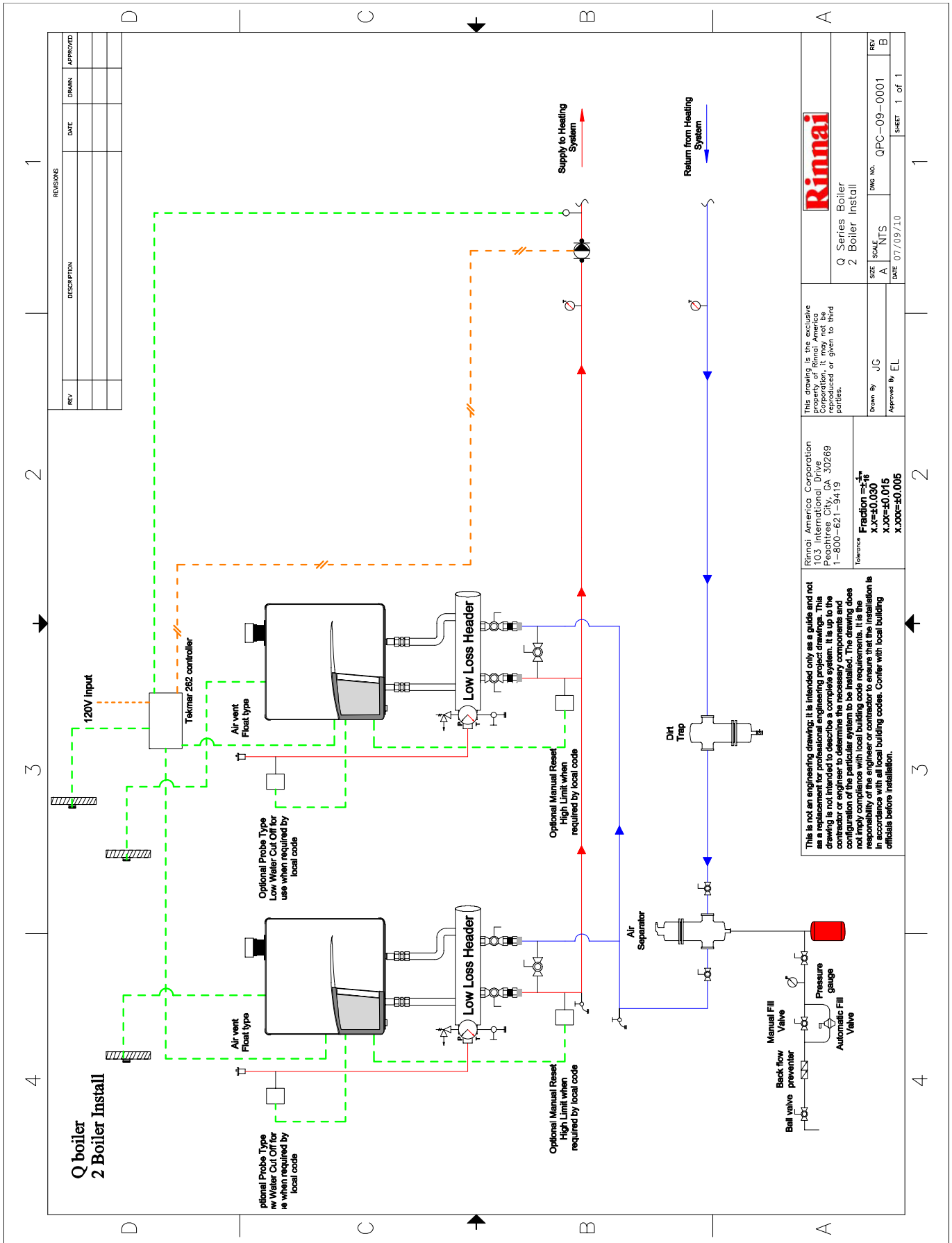
Sewer line

This is not an engineering drawing. It is intended only as a guide and not as a replacement for professional engineering project drawings. This drawing is not intended to describe a complete system. It is up to the contractor or engineer to determine the necessary components and configuration of the particular system to be installed. The drawing does not imply compliance with local building code requirements. It is the responsibility of the engineer or contractor to ensure that the installation is in accordance with all local building codes. Confer with local building officials before installation.

Rinnai America Corporation
103 International Drive
Peachtree City, GA 30269
1-800-621-9419
Tolerance
Fraction = $\frac{1}{16}$
X.XX=±0.030
X.XXX=±0.015
X.XXXX=±0.005

This drawing is the exclusive property of Rinnai America Corporation. It may not be reproduced or given to third parties.
Drawn By: JG
Approved By: EL

Q and E boilers Condensate Plumbing
With and With out Neutralizer
DATE: 11/19/09
DWG No.: QPA-09-0009
SCALE: A
SIZE: A
REV: A
SHEET: 1 of 1



REV	DESCRIPTION	DATE	DRAWN	APPROVED

This is not an engineering drawing. It is intended only as a guide and not as a replacement for professional engineering project drawings. This drawing is not intended to describe a complete system. It is up to the contractor or engineer to determine the necessary components and configuration of the particular system to be installed. The drawing does not imply compliance with local building code requirements. It is the responsibility of the engineer or contractor to ensure that the installation is in accordance with all local building codes. Confer with local building officials before installation.

Rinnai America Corporation
103 International Drive
Peachtree City, GA 30269
1-800-621-9419

Fraction = $\frac{x}{y}$
x.xx=±0.030
x.xxx=±0.015
x.xxxx=±0.005

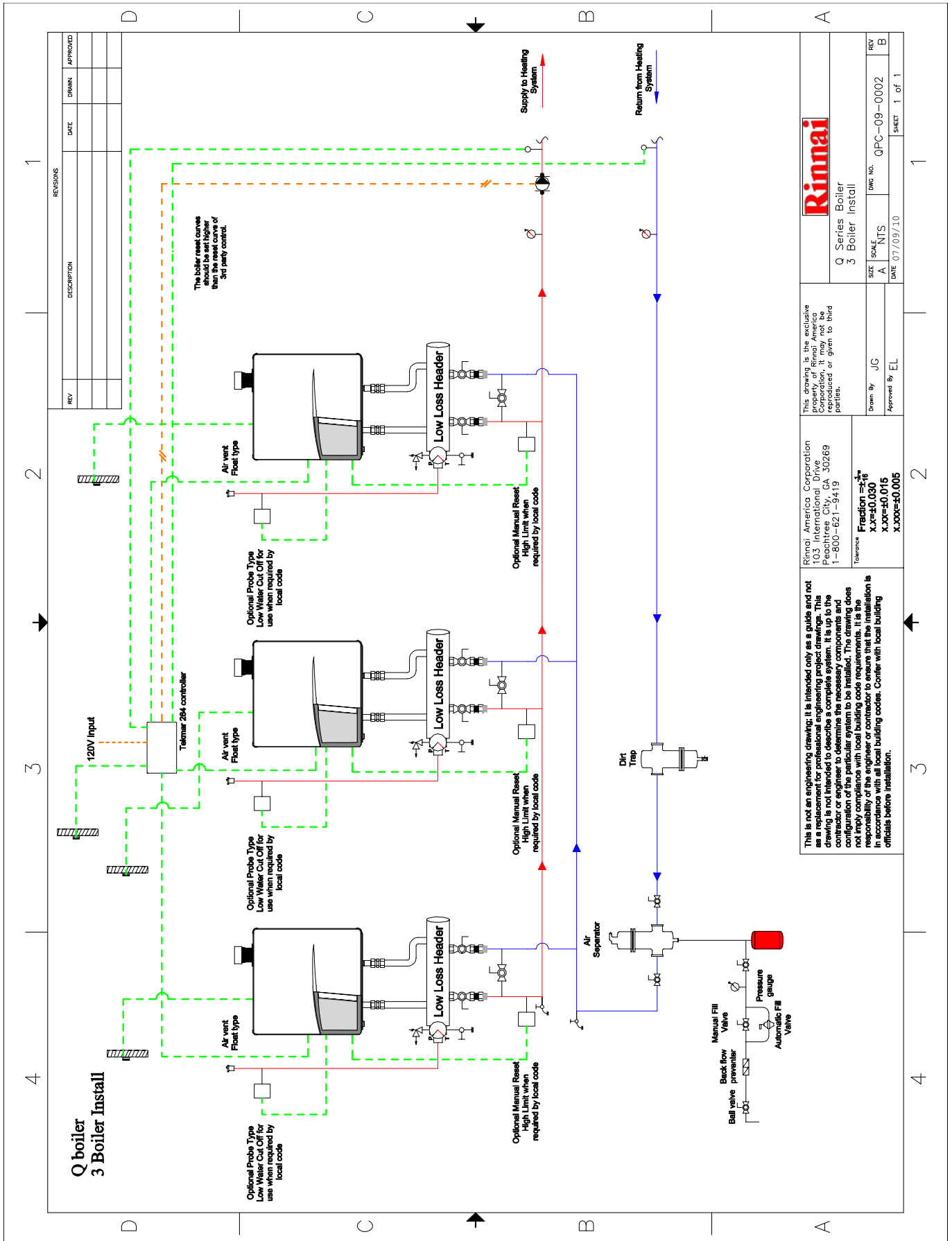
Rinnai
Q Series Boiler
2 Boiler Install

Drawn By: JG
Approved By: EL

Scale: A
Date: 07/09/10

DWG NO.: QPC-09-0001
REV: B

SHEET 1 of 1



Rimai

Q Series Boiler
3 Boiler Install

DATE: 07/09/10

DWG NO.: QPC-09-0002

REV: 1 of 1

Drawn By: JG

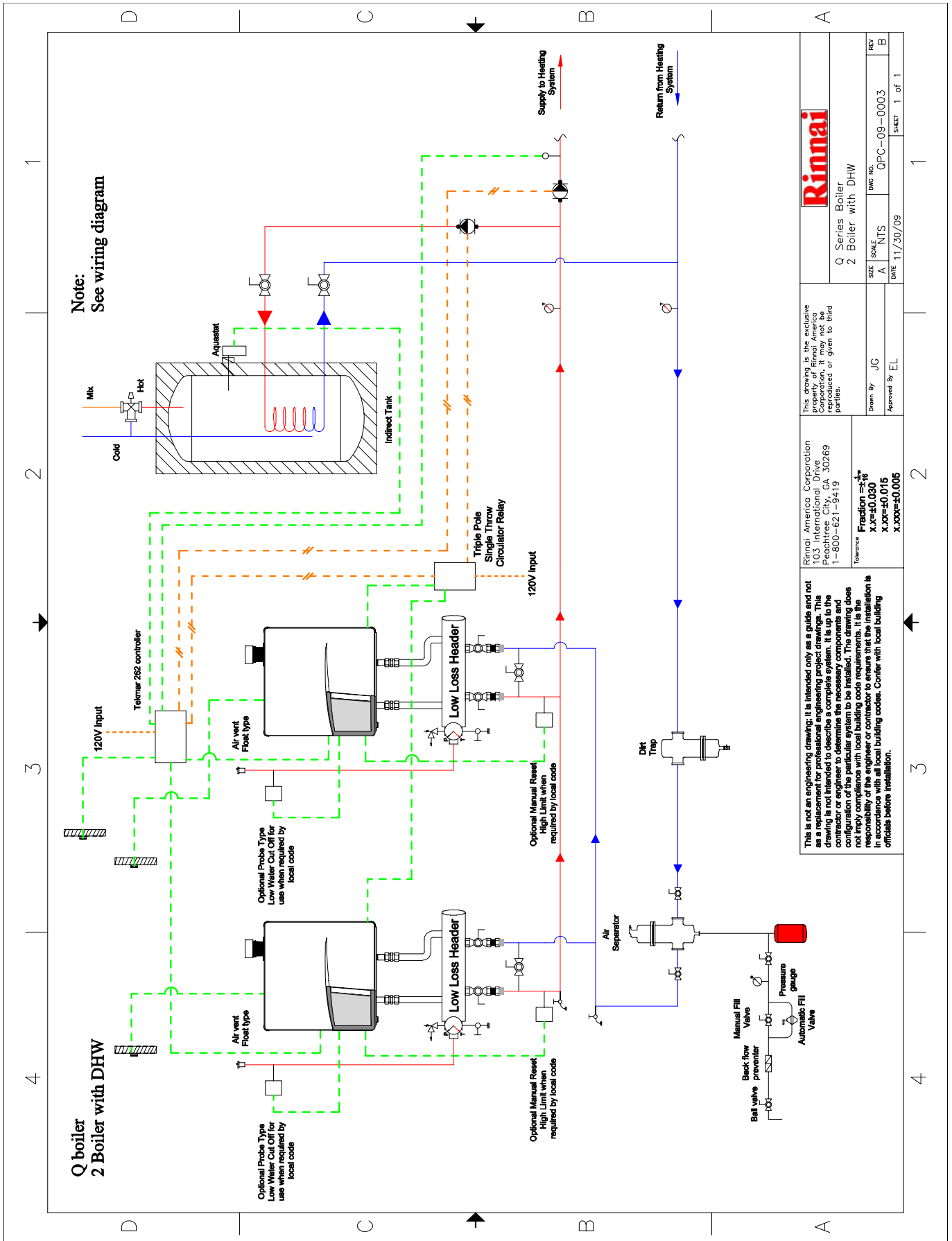
Approved By: EL

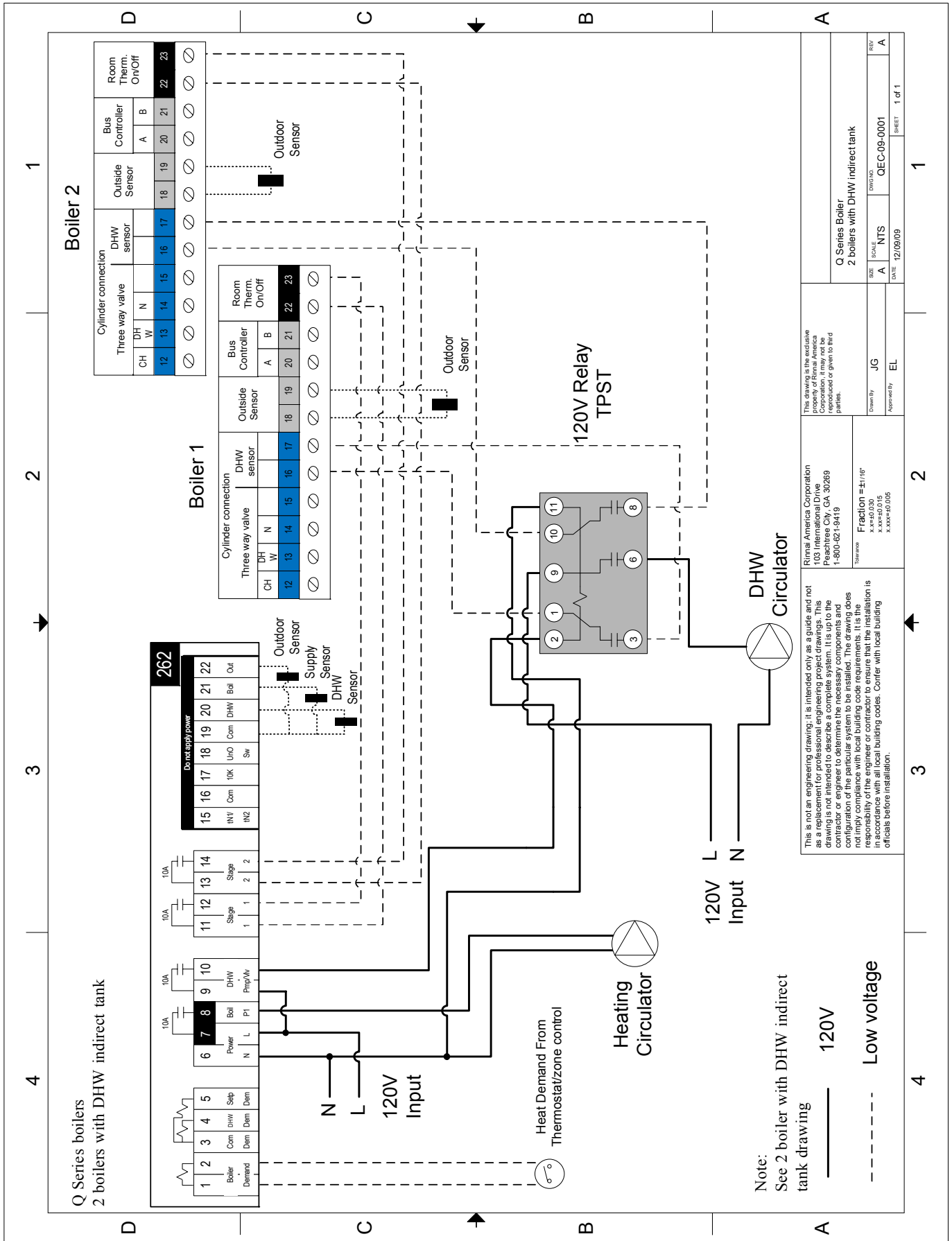
This drawing is the exclusive property of Rimai, America Corporation. It may not be reproduced or given to third parties.

Rimai, America Corporation
103 International Drive
Peachtree City, GA 30269
1-800-621-9419

Tolerance
Fraction = $\frac{1}{16}$
X.XX = ±0.030
X.XXX = ±0.015
X.XXXX = ±0.005

This is not an engineering drawing; it is intended only as a guide and not as a replacement for professional engineering project drawings. This drawing is not intended to describe a complete system. It is up to the contractor or engineer to determine the necessary components and configuration of the particular system to be installed. The drawing does not imply compliance with local building codes requirements. It is the responsibility of the engineer or contractor to ensure that the installation is in accordance with all local building codes. Confer with local building officials before installation.





This drawing is the exclusive property of Rinnai America Corporation. It may not be reproduced or given to third parties.

This is not an engineering drawing; it is intended only as a guide and not as a replacement for professional engineering project drawings. This drawing is not intended to describe a complete system. It is up to the contractor or engineer to determine the necessary components and configuration of the particular system to be installed. The drawing does not imply compliance with local building code requirements. It is the responsibility of the engineer or contractor to ensure that the installation is in accordance with all local building codes. Confer with local building officials before installation.

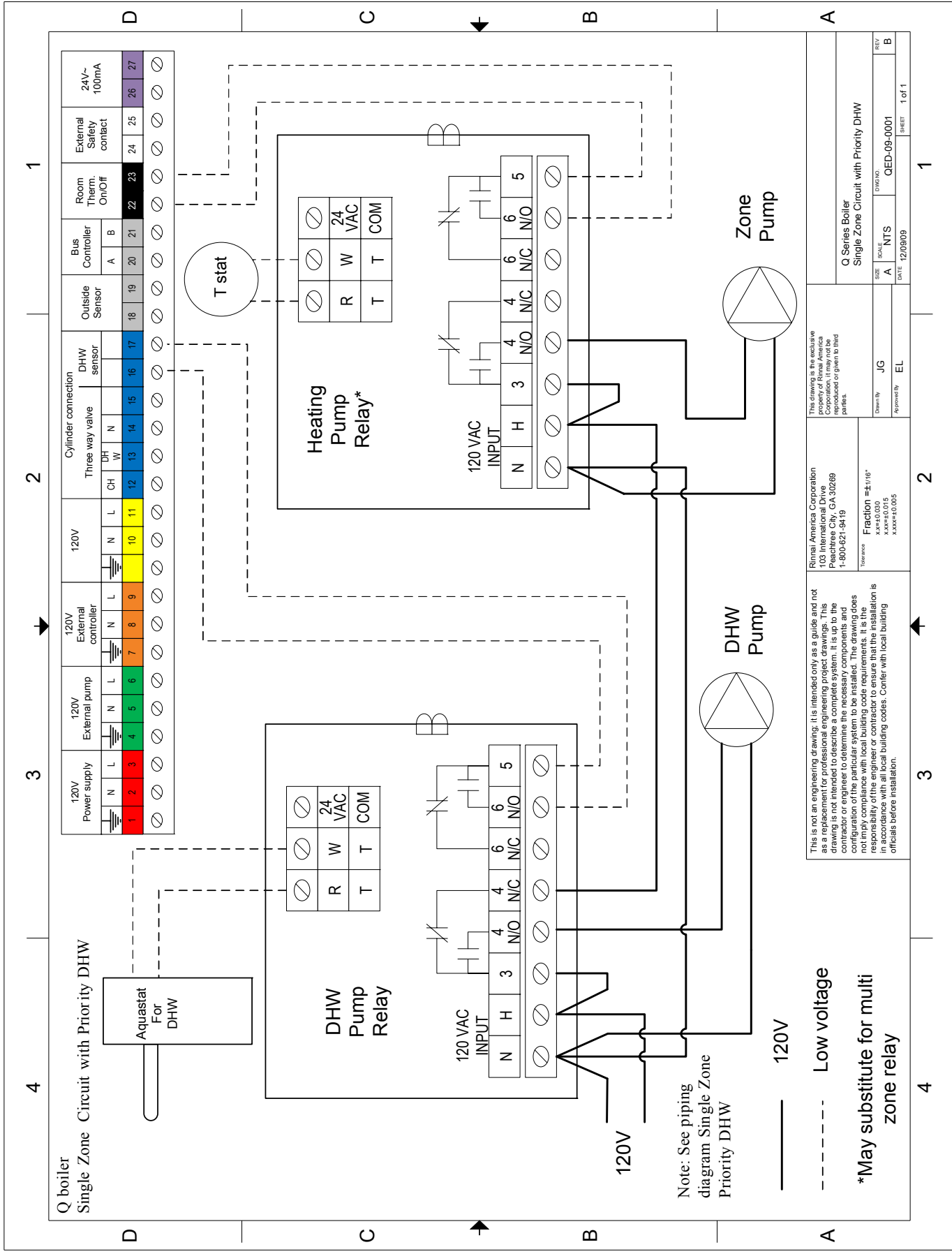
Rinnai America Corporation
103 International Drive
Peachtree City, GA 30269
1-800-621-9419

Drawn By: JG
Approved By: EL

Scale: NTS
Date: 12/09/09

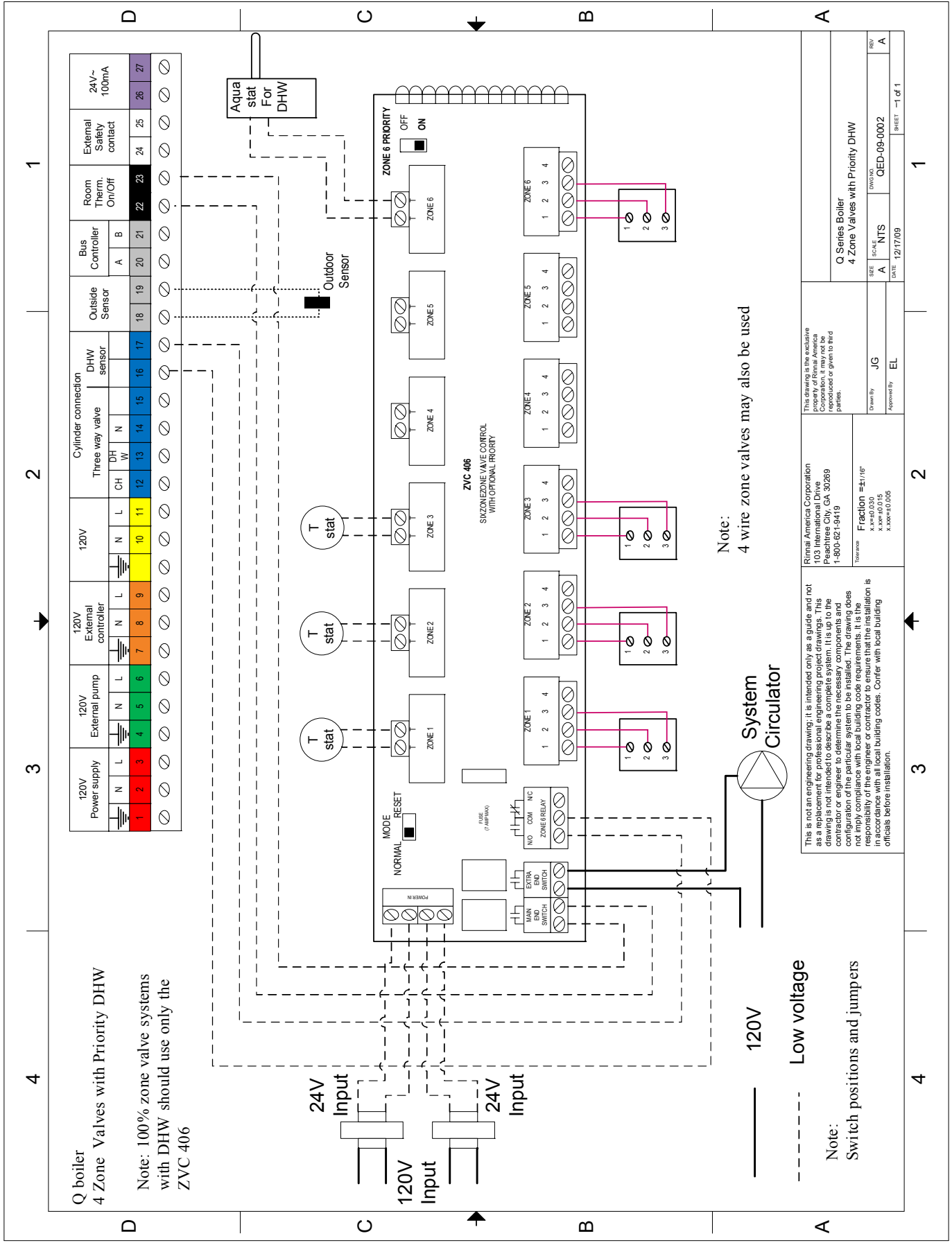
Revision: Q Series Boiler
2 boilers with DHW indirect tank

Sheet: 1 of 1



<p>This drawing is the exclusive property of Rheem America Corporation. It may not be reproduced or given to third parties.</p>	<p>Rheem America Corporation 103 International Drive Peachtree City, GA 30269 1-800-621-9419</p>	<p>Drawn By: JG Scale: NTS Date: 12/09/09</p>	<p>Q Series Boiler Single Zone Circuit with Priority DHW</p>
<p>Tolerance XX±0.030 XXX±0.015 XXX±0.005</p>	<p>Fraction = 4/16"</p>	<p>Approved By: EL</p>	<p>REV B</p>
		<p>QED-09-0001</p>	<p>1 of 1</p>

This is not an engineering drawing; it is intended only as a guide and not as a replacement for professional engineering project drawings. This drawing is not intended to describe a complete system. It is up to the contractor or engineer to determine the necessary components and configuration of the particular system to be installed. The drawing does not imply compliance with local building code requirements. It is the responsibility of the engineer or contractor to ensure that the installation is in accordance with all local building codes. Confer with local building officials before installation.



REV	A	DATE	12/17/09	SHEET	1 of 1
SCALE	NTS	DWG/NO	QED-09-0002	REV	A
Drawn By	JG	EL			
Approved By					

This drawing is the exclusive property of Rinnai America Corporation. It may not be reproduced or given to third parties.

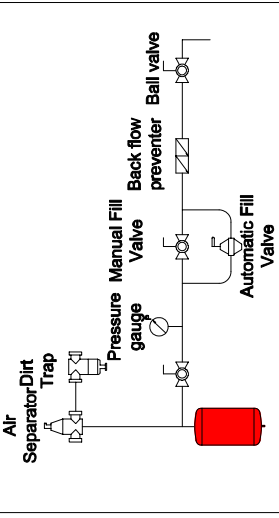
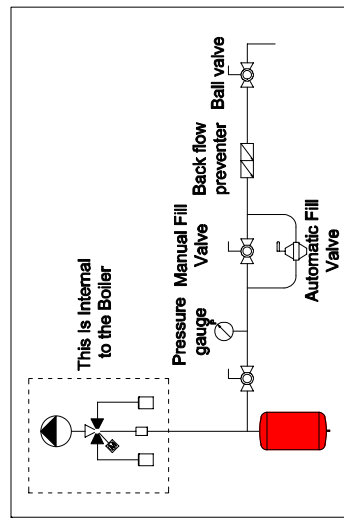
Rinnai America Corporation
103 International Drive
Peachtree City, GA 30269
1-800-621-9419

Tolerance
X.XX=±0.030
X.XX=±0.015
X.XXX=±0.005

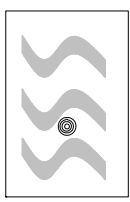
This is not an engineering drawing; it is intended only as a guide and not as a replacement for professional engineering project drawings. This drawing is not intended to describe a complete system. It is up to the contractor or engineer to determine the necessary components and configuration of the particular system to be installed. The drawing does not imply compliance with local building code requirements. It is the responsibility of the engineer or contractor to ensure that the installation is in accordance with all local building codes. Confer with local building officials before installation.

Rinnai Boilers Legend

The following picture illustrates a suggested arrangement. Some of the fittings are optional.

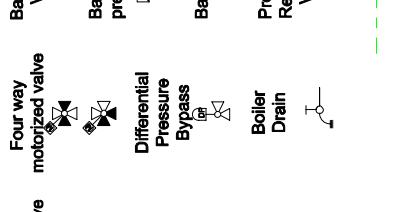
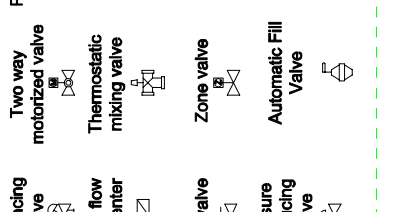
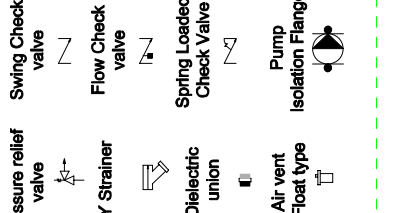
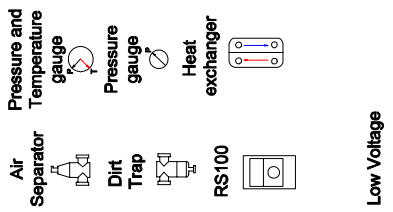
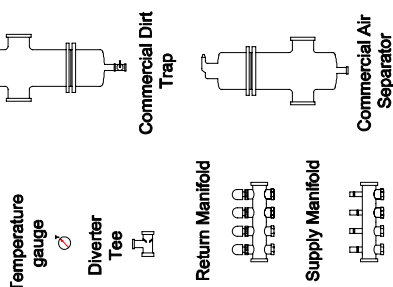
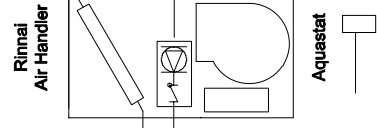
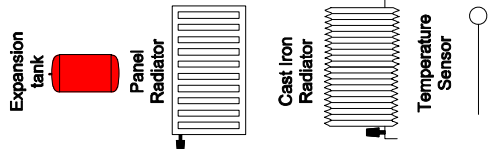


The following picture illustrates a suggested arrangement. Some of the fittings are optional.



Snow Melt Sensor
Snow Melt System

Baseboard Convectors



This is not an engineering drawing. It is intended only as a guide and not as a replacement for professional engineering project drawings. This drawing is not intended to describe a complete system. It is up to the contractor or engineer to determine the necessary components and configuration of the particular system to be installed. The drawing does not imply compliance with local building code requirements. It is the responsibility of the engineer or contractor to ensure that the installation is in accordance with all local building codes. Confer with local building officials before installation.

Rinnai America Corporation
103 International Drive
Peachtree City, GA 30269
1-800-621-9419

Tolerance
Fraction = 1/16
X.XX=±0.030
X.XXX=±0.015
X.XXXX=±0.005

Drawn By: JUC
Approved By: ELL

This drawing is the exclusive property of Rinnai America Corporation. It may not be reproduced or given to third parties.

Rinnai Boilers Legend	
SIZE	A
SCALE	NTS
DWG. NO.	LEGEND
DATE	11/19/03
SHEET	1 of 1

Notes

— Ask about — Rinnai®

Rinnai's other fine products

EXPERIENCE OUR INNOVATION™



Tankless Water Heaters

- Residential and Commercial Applications
 - Continuous Hot Water
 - ENERGY STAR® qualified models
 - Up to 9.8 GPM
 - Internal or External Installation
 - Digital Temperature Control
-



Direct Vent Furnaces

- High Efficiency
 - Cool-to-the-touch Cabinet
 - Vent Terminal A Included
 - Blower Included
-



Direct-Vent Fireplace, RHFE-750ETRA

- Up to 83% AFUE Energy Efficiency
 - Zero-Clearance Installation
 - Available in Four Options of Fronts
 - Remotes and Fan Included
 - Gas Conversion Kit Available
-



Hydronic Air Handler

- Designed for Use with Rinnai Systems
 - Domestic Hot Water Priority
 - Optional Programmable Thermostat
 - Zero Clearance to Combustibles
 - Accommodates Standard Cased-Coils
-



Boilers

- Residential and Commercial Applications
 - ENERGY STAR® qualified models
 - Up to 96.5% AFUE efficiency
 - Compact wall mounted design
 - ASME accredited models
-



Condensing Tankless Water Heaters

- Residential and Commercial Applications
 - ENERGY STAR® qualified models
 - Up to 95% thermal efficiency
 - Internal or External Installation
 - Pair up with the Rinnai Air Handler for efficient home heating
-



Rinnai Impression - Outdoor Fireplace

- Options include one-sided open, two-sided open, and freestanding.
 - No electrical requirements
 - Propane or convertible to natural gas with conversion kit provided
 - Modular construction offers design flexibility
-

Register your product at
www.rinnairegistration.com
or call 1-866-RINNAI1 (746-6241)

For information on Rinnai's products contact
Rinnai America Corporation
103 International Drive
Peachtree City, GA 30269
TOLL FREE: 1-800-621-9419
FAX: 678-829-1666
www.rinnai.us

Boiler Applications Manual
800000026 Rev B
7/2010